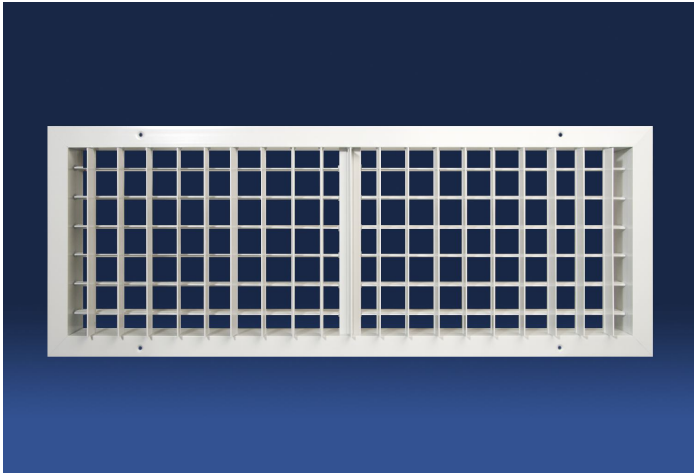
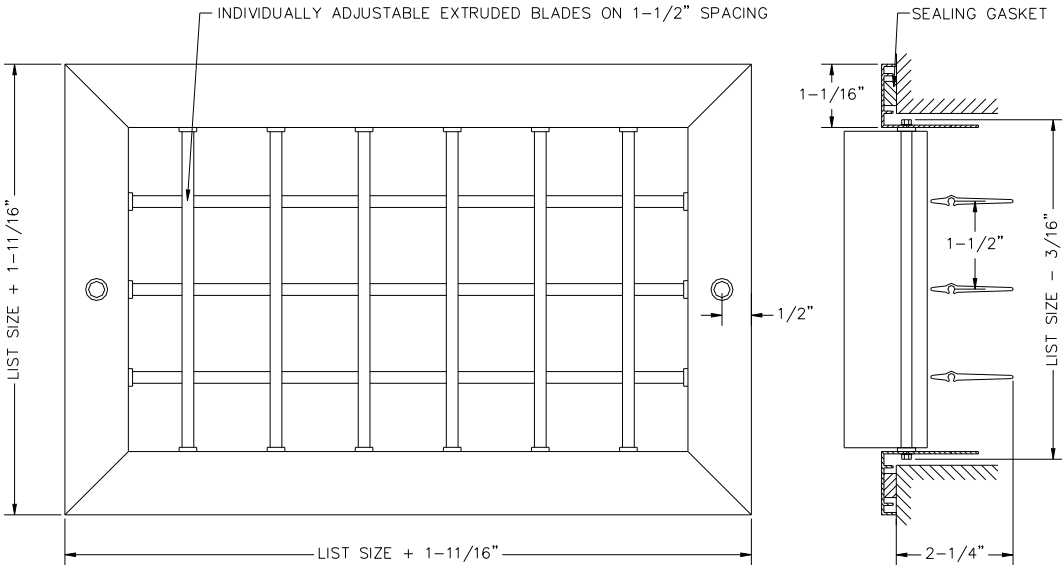


Double Deflection Industrial Supply Grille

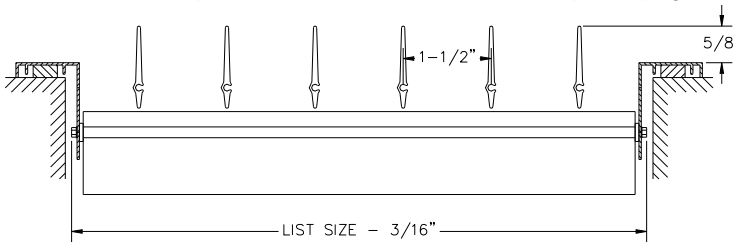
DAIGVH



- Double deflection individually adjustable blades on 1-1/2" spacing provide a large free area
- Extruded aluminum blade with semi-airfoil design
- Aluminum extruded frame with mechanically locked corners
- Countersunk screw holes c/w painted mounting screws
- Sealing gasket to prevent streaking on walls or ceiling
- Available on 2" increments as standard
- Custom sizes available, but extra charge may apply
- Max blade length is 26", mullions used for larger sizes
- Durable powder coat painted finish
- Available in White, Silver or Special*



Standard blade option shown. See Industrial Grille Options page.



MODEL	DAIGVH
FACE BLADES	Vertical Adjustable
REAR BLADES	Horizontal Adjustable
DAMPER	n/a
MATERIAL	Aluminum
COLOR	White/Silver/Special*

JOB NAME: _____

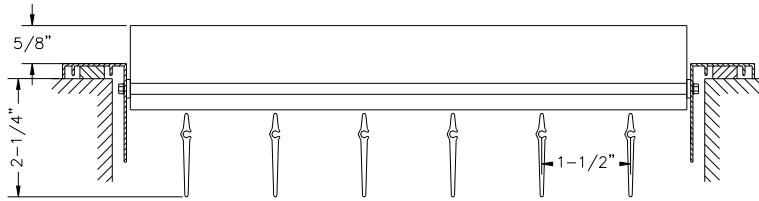
LOCATION: _____

ARCHITECT: _____

ENGINEER: _____

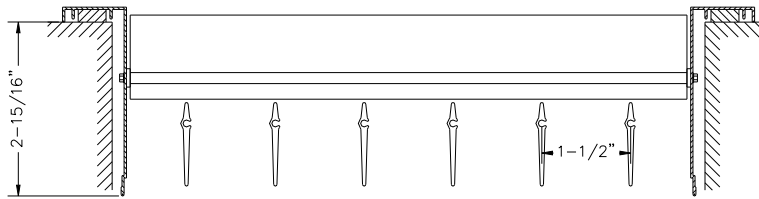
CONTRACTOR: _____

Industrial Grille Options

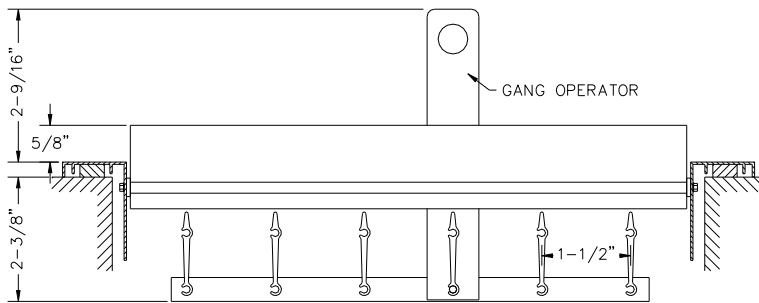


Standard

Standard blade option can extend out up to 5/8".
Do not specify this blade option for a location where it may cause a safety concern.

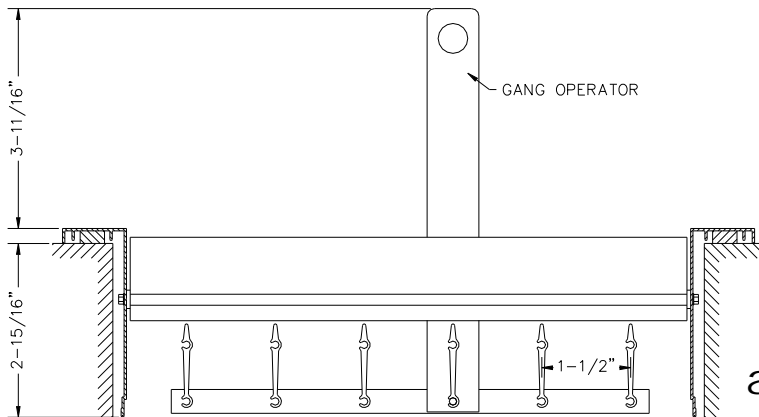


-R
Recessed blades



-G
Ganged blades

Gang operator can extend out up to 2-9/16".
Do not specify this blade option for a location where it may cause a safety concern.
Extra operator installed every 26".



-R-G
Recessed blades
and Gang operator

Gang operator can extend out up to 3-11/16".
Do not specify this blade option for a location where it may cause a safety concern.
Extra operator installed every 26".